



# MONTHLY MEMBERSHIP PROGRESS REPORT

District 29 I

Results as of: 08/31/2017

GMT: CINDY GREGG

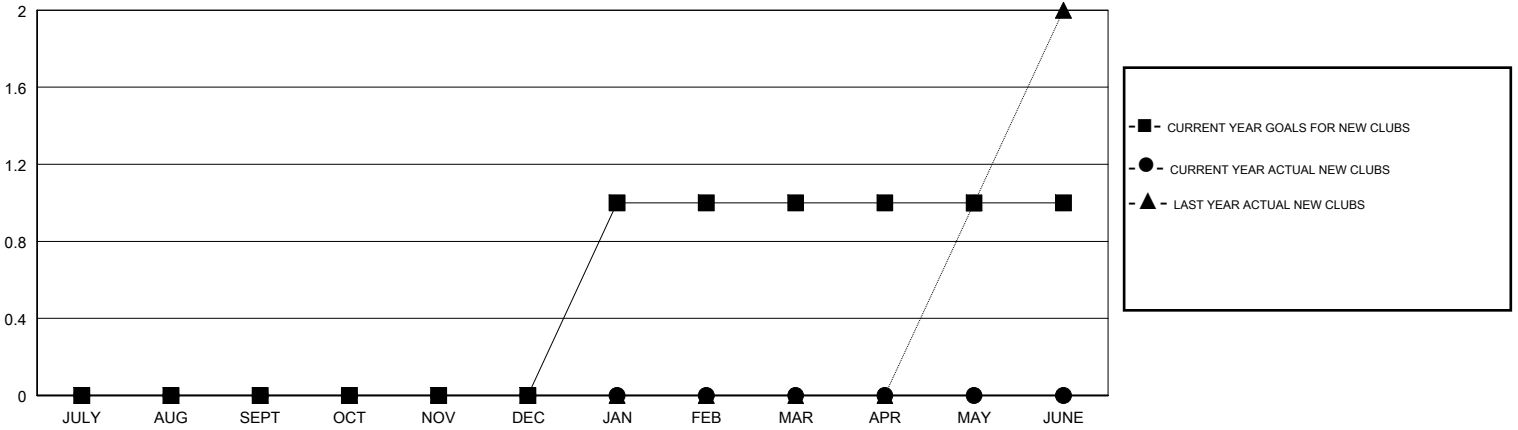
LOCATION WEST VIRGINIA

GMT CA

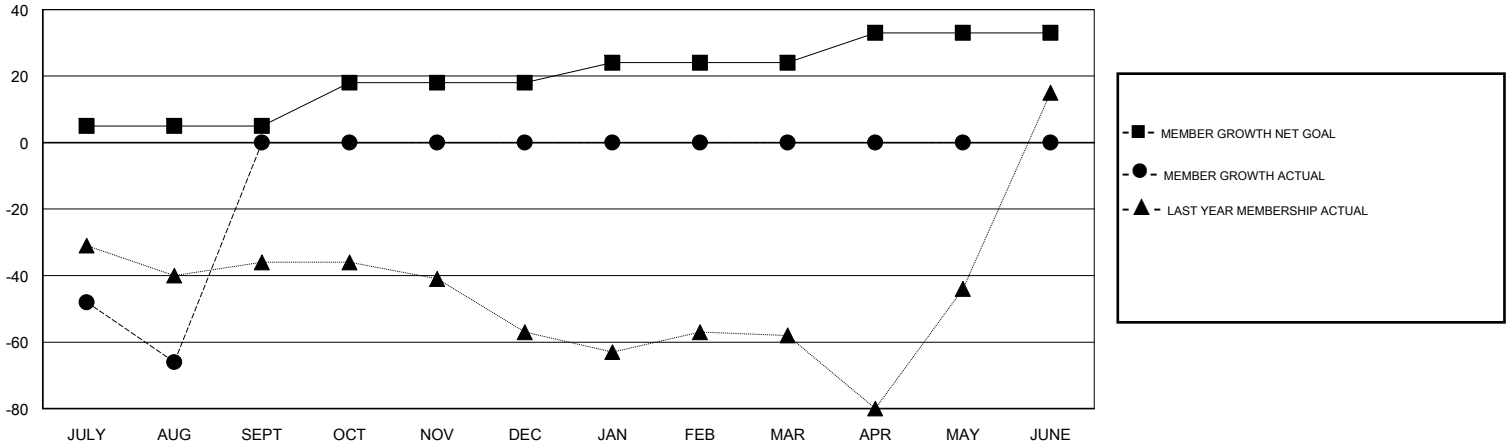
Clubs			
RESULTS FOR 2017-2018			
QUARTER	NEW CLUB GOAL	NEW CLUBS	DROPPED CLUBS
JULY/AUG/SEPT	0	0	0
OCT/NOV/DEC	0	0	0
JAN/FEB/MAR	1	0	0
APR/MAY/JUNE	0	0	0

Members			
RESULTS FOR 2017-2018			
QUARTER	MEMBER GROWTH NET GOAL	MEMBER GROWTH ACTUAL	DROPPED MEMBERS ACTUAL (including transfers)
JULY/AUG/SEPT	5	8	74
OCT/NOV/DEC	13	0	0
JAN/FEB/MAR	6	0	0
APR/MAY/JUNE	9	0	0

GOALS AND ACTUAL NEW CLUBS CUMULATIVE



GOALS AND ACTUAL MEMBERS CUMULATIVE



DROPPED CLUBS: 0	4 CLUBS OF 55 ADDED 1 OR MORE NEW MEMBERS	<b>GENDER DISTRIBUTION</b> MALE 1,033 (65.71%) FEMALE 539 (34.29%) Women Percentage Fiscal Year Goal: 35%
<b>DROPPED MEMBERS</b>	<a href="#">CLICK HERE FOR CUMULATIVE MEMBERSHIP DATA</a>	TOTAL FAMILY UNIT MEMBERS 467
DECEASED 7		FAMILY MEMBERS PAYING HALF DUES 237
CLUB CANCELLED 0		
OTHER 67		
<b>TOTAL 74</b>		